

ISSUE/Year

03-2018

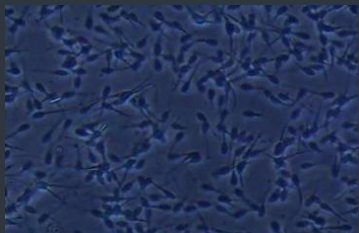
Semen freezing (Deer)

by
Dr. Hernan Baldassarre

Semen collection



Semen evaluation in mobile lab



If you own a valuable male you know how difficult it is to come up with an outstanding animal. You can repeat the same breeding multiple times and never produce a male that good again. This is because during the process of production of sperm and eggs, the genes recombine in a unique way, with millions of possible outcomes, a process called “crossing over”. This is what makes all of us completely unique, very different from our brothers and sisters, and also why your buck is so special.

Consequently, it is very important to secure your genetically valuable animal, and the best insurance you can have is multiple hundreds of doses of frozen semen in your nitrogen tank. So right there is the first justification for freezing semen from your top males, the possibility of extending the reproductive life of your buck beyond its own life.

Frozen semen is a commodity and as such a potential source of additional revenue in the form of semen sales, including sales to clients in other states and countries.

It can also work the opposite way, i.e. freeze several hundreds of straws for your own use and then sell the buck so you don't have to deal with the responsibility and risks associated with owning a valuable buck.

How important is prepping the males prior to semen collection?

Absolutely crucial! Unlike females, who are born with all the eggs they will produce in their life, males produce new sperm constantly from about the time they reach

puberty. Sperm are produced following hormonal stimulation and hormones are produced with seasonal variations, similarly to what happens in females. So semen production is much more intense during the shorter days of the fall and winter. What most people don't know is that spermatogenesis (the process of producing sperm in the testes) takes around 52 days. This is crucial information for understanding that the quality of the semen collected today will be influenced by what happened to that male in the last 7-8 weeks. Additionally, sperm have an “expiry date”, so if the male has been sexually inactive for a long period prior to semen collection for freezing, it is highly probable that the semen sample will contain a lot of aged and dead sperm. Therefore, we have used our knowledge in male reproductive physiology to design male enhancement protocols that will stimulate spermatogenesis, flush out the old and dead sperm, improve fertility and maximize the outcome on the day of semen collection for freezing.

Why do your semen work with ARS?

We have >20 years of experience freezing semen and have a fully equipped mobile

laboratory allowing us to produce semen of unparalleled quality. Our proven protocols provide increased probability of success in the production of large quantities and quality of semen per buck collection. Our equipment, methods and semen extenders allow us evaluating the semen in depth and maximizing the number of high quality straws produced. Moreover, if sex-sorted semen is of your interest, we are fully proficient in preparation and submission of semen to Sexing Technologies Inc. for the generation of sexed semen straws.

In addition to providing you with a semen freezing service that is technically second to none, the package includes what we call the **ARS Difference**. We are a group of 3 veterinary professionals with advanced degrees in reproduction physiology and nutrition. As such, we understand how important it is to minimize the anesthesia risks for your animals and to maximize the opportunity to examine and treat your animals while they are sedated. Throughout the procedure the bucks will be catheterized (IV) to provide fluids and ability for fast response if needed, their cardiorespiratory systems monitored, a blood sample will be taken for a quick onsite chemical analysis by portable machine that allows us to assess the liver, kidneys and critical minerals and proteins in blood. Through this individual assessment we'll be able to make inference regarding the general health of your herd, thereby allowing us to develop recommendations and/or a specialized program for you. And you are getting all these extras included in the semen collection fee (no extra cost to you).

ARS Difference – Onsite blood test parameters

View Result			
ALB	2.8	2.5-4.4	g/dL
ALP	38	20-150	U/L
ALT	35	10-118	U/L
AMY	125 *	200-1200	U/L
TBIL	0.3	0.1-0.6	mg/dL
BUN	27 *	7-25	mg/dL
CA	9.6	8.6-11.8	mg/dL
PHOS	9.2 *	2.9-6.6	mg/dL
CRE	1.6 *	0.3-1.4	mg/dL
GLU	157 *	60-110	mg/dL
Wb+	144	138-160	mmol/L
K+	5.3	3.7-5.8	mmol/L
TP	6.3	5.4-8.2	g/dL
CROR	2.5	2.3-5.2	g/dL

Back Home Print

Contact Us

Dr. Joe Ables

(940) 389-1738

drjoeables@gmail.com

Dr. Tonya Stephens

(352) 514-3564

animalreprosol@gmail.com

Dr. Hernan Baldassarre

(514) 867-7475

hernanbalda@gmail.com

The ARS Team @ work

(Drs. Tonya Stephens, Hernan Baldassarre and Joe Ables)

